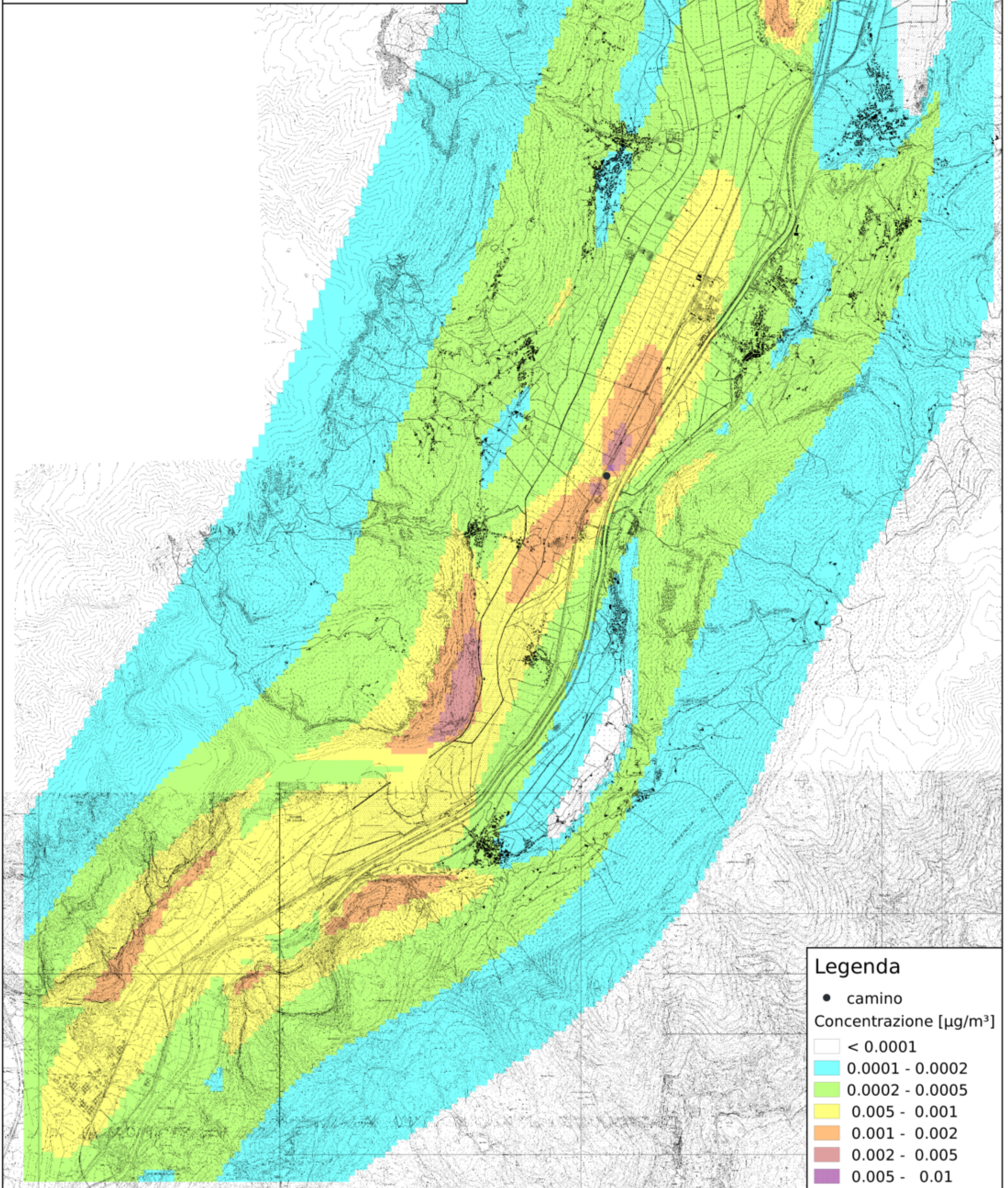


Tav. A.10
Concentrazione NO media annua
H = 45m, T = 181°C
C_NOx emissione = 200 mg/Nm³



Legenda

- camino

Concentrazione [$\mu\text{g}/\text{m}^3$]

	< 0.0001
	0.0001 - 0.0002
	0.0002 - 0.0005
	0.0005 - 0.001
	0.001 - 0.002
	0.002 - 0.005
	0.005 - 0.01

Scala 1:60000

