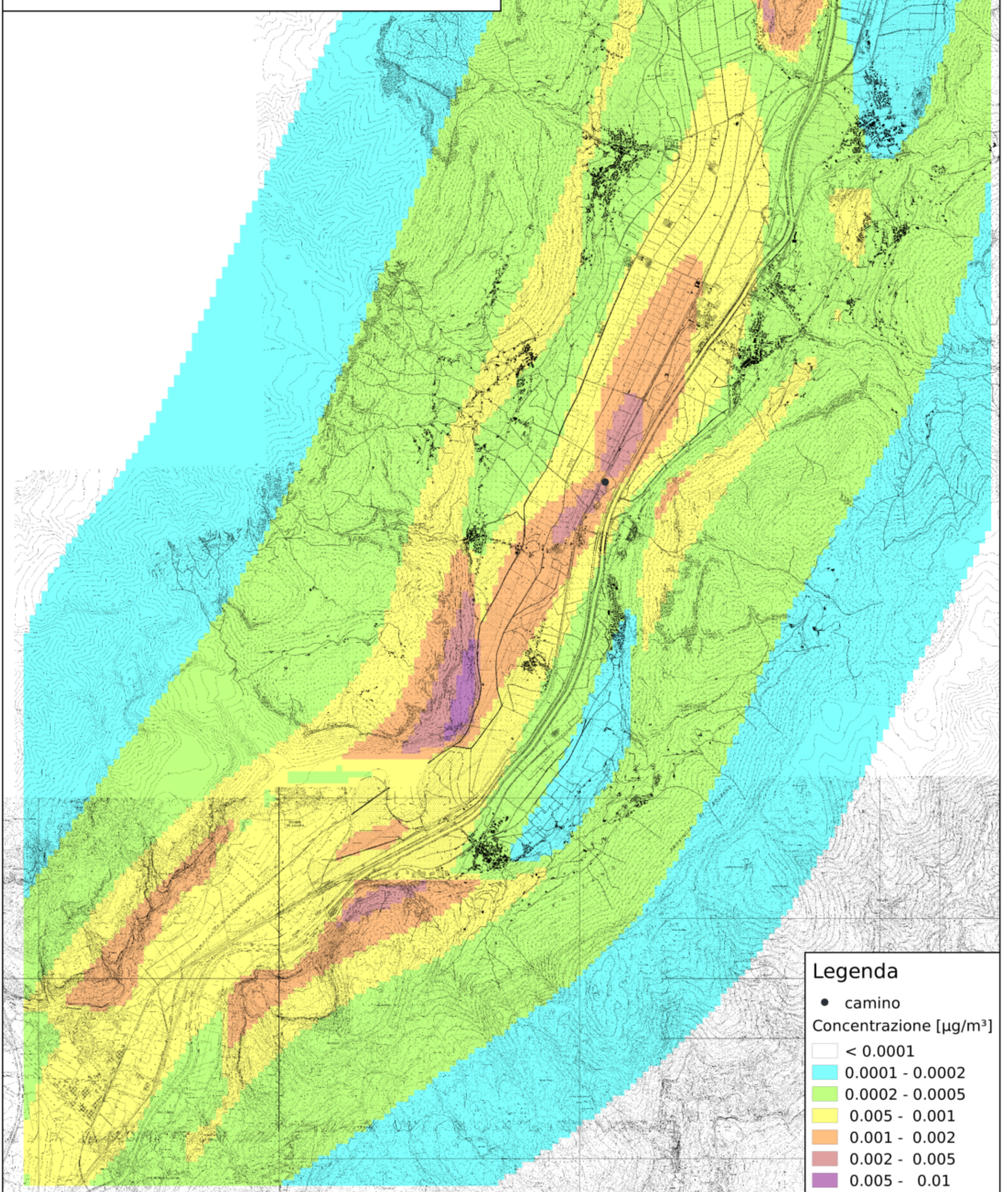


Tav. B.16  
Concentrazione PM10 media annua  
H = 55m, T = 181°C  
C\_PTS emissione = 10 mg/Nm<sup>3</sup>



**Legenda**

● camino

Concentrazione [ $\mu\text{g}/\text{m}^3$ ]

< 0.0001

0.0001 - 0.0002

0.0002 - 0.0005

0.0005 - 0.001

0.001 - 0.002

0.002 - 0.005

0.005 - 0.01

Scala 1:60000

