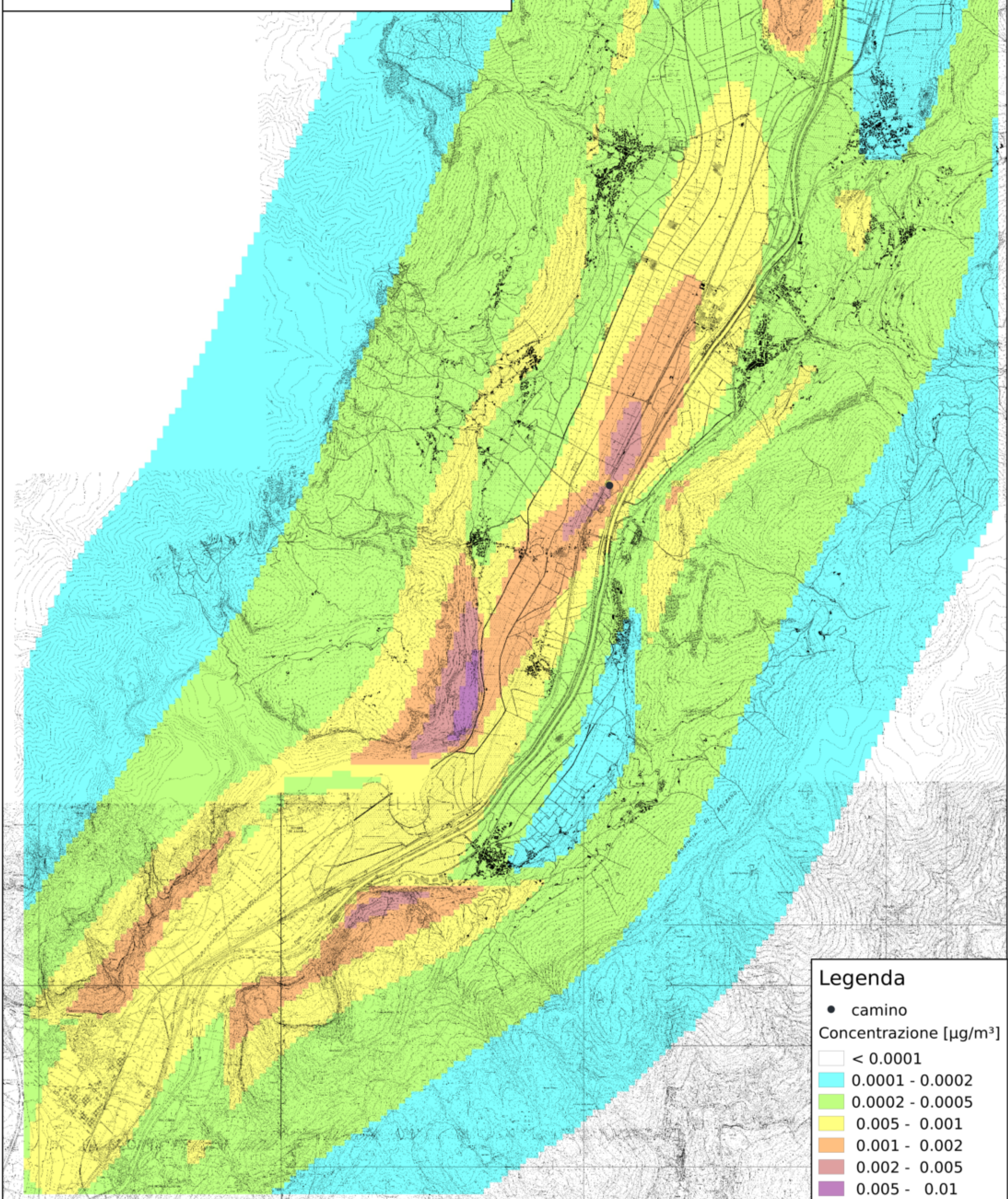


Tav. B.15  
Concentrazione PM2.5 media annua  
H = 55m, T = 181°C  
C\_PTS emissione = 10 mg/Nm<sup>3</sup>



**Legenda**

- camino

Concentrazione [ $\mu\text{g}/\text{m}^3$ ]

□	< 0.0001
□	0.0001 - 0.0002
□	0.0002 - 0.0005
□	0.0005 - 0.001
□	0.001 - 0.002
□	0.002 - 0.005
□	0.005 - 0.01

Scala 1:60000

