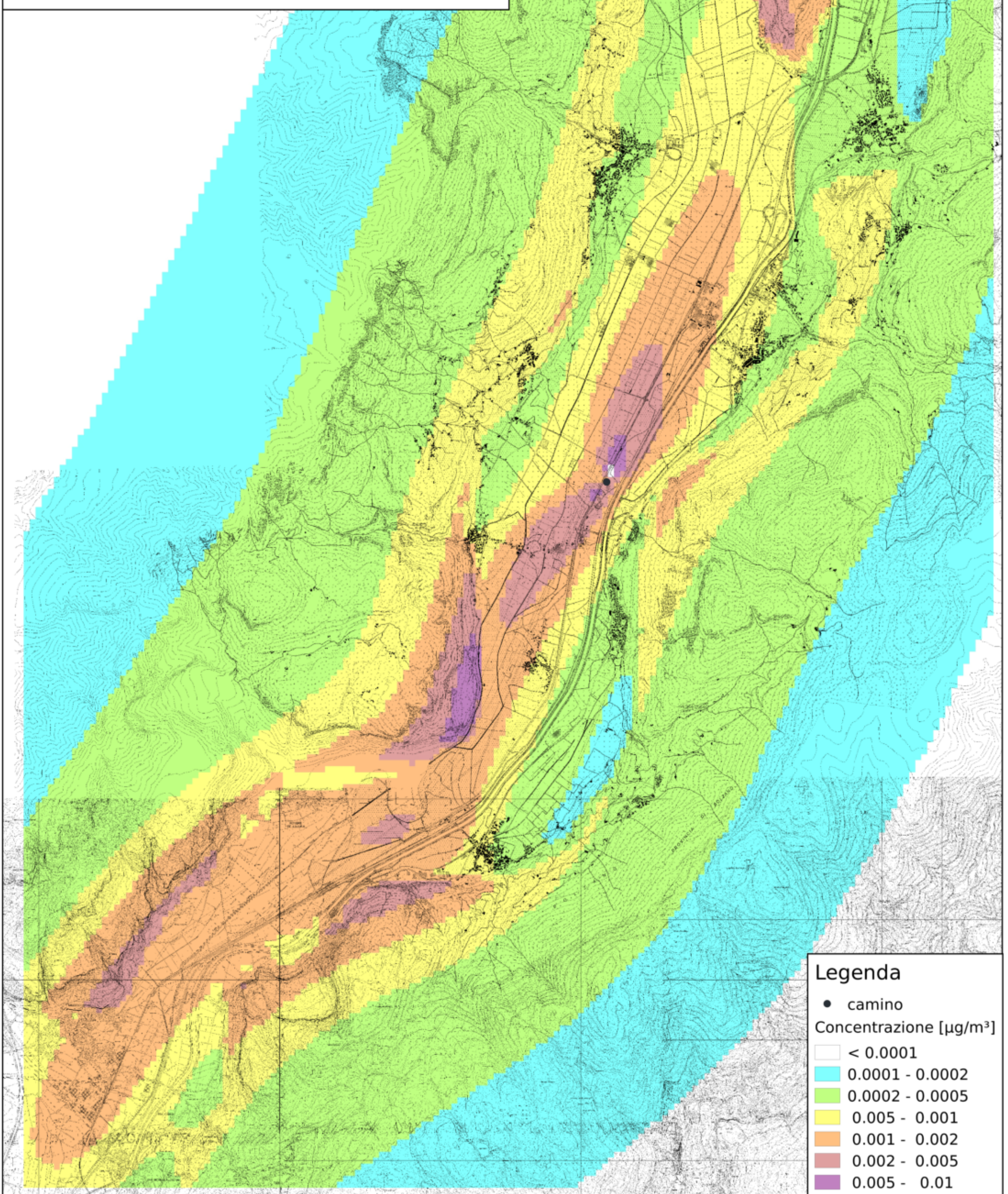


Tav. C.15bis
Concentrazione PM2.5 media annua
H = 45m, T = 130°C
C_PTS emissione = 10 mg/Nm³



Legenda

- camino

Concentrazione [$\mu\text{g}/\text{m}^3$]

□	< 0.0001
□	0.0001 - 0.0002
□	0.0002 - 0.0005
□	0.0005 - 0.001
□	0.001 - 0.002
□	0.002 - 0.005
□	0.005 - 0.01

Scala 1:60000

