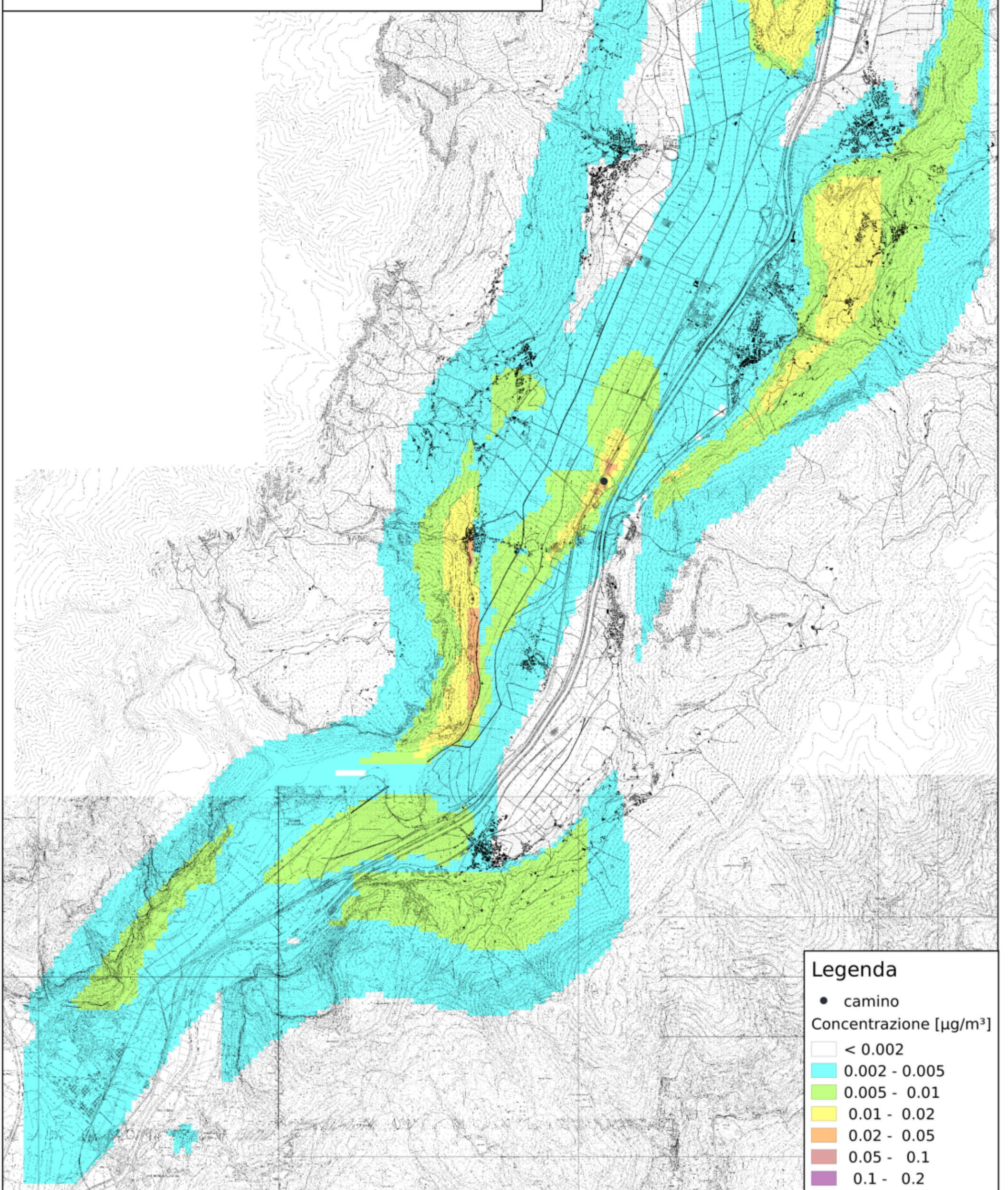


Tav. F.20
Concentrazione SO₂ massima giornaliera
H = 55m, T = 181°C
C_SO₂ emissione = 10 mg/Nm³



Legenda

- camino

Concentrazione [µg/m³]

□	< 0.002
■	0.002 - 0.005
■	0.005 - 0.01
■	0.01 - 0.02
■	0.02 - 0.05
■	0.05 - 0.1
■	0.1 - 0.2

Scala 1:60000

