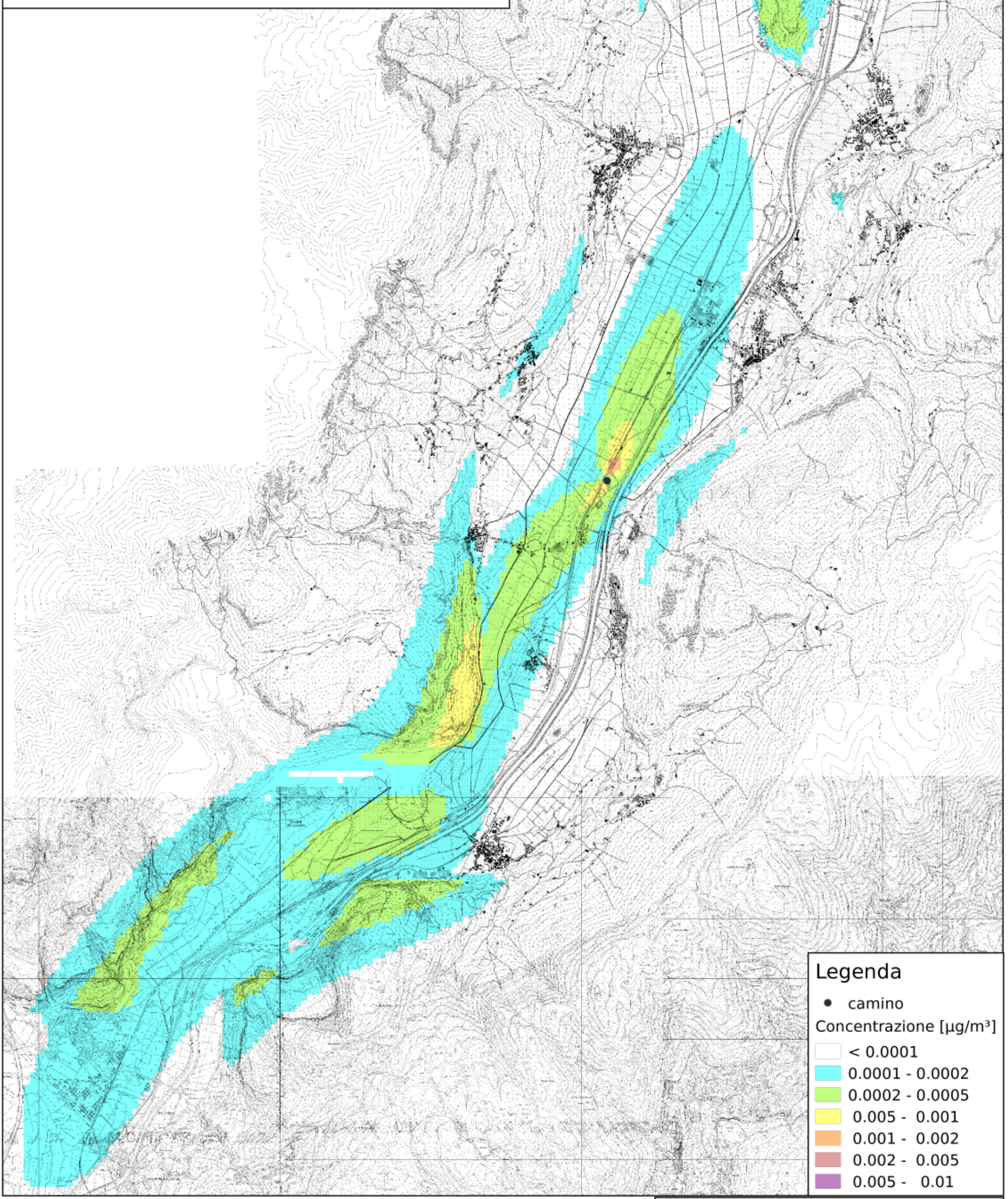


Tav. G.15  
Concentrazione PM2.5 media annua  
H = 45m, T = 130°C  
C\_PTS emissione = 1.5 mg/Nm<sup>3</sup>



**Legenda**

- camino

Concentrazione [µg/m<sup>3</sup>]

□	< 0.0001
■	0.0001 - 0.0002
■	0.0002 - 0.0005
■	0.0005 - 0.001
■	0.001 - 0.002
■	0.002 - 0.005
■	0.005 - 0.01

Scala 1:60000

